


**lifeforce** | map of emotions



ANGRY



DISGUSTED



PEACEFUL



JOYFUL



LONELY



LOVING



AGGRESSIVE



IRRITATED



PLEASED



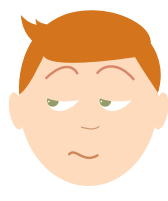
ADMIRING



PAINED



TIRED



DISTRUSTFUL



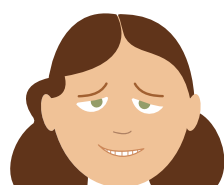
PANICKED



SURPRISED



ANNOYED



ASHAMED



ANXIOUS



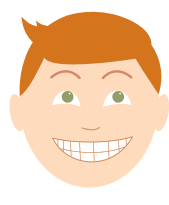
FEARFUL



EXCITED



HAPPY



STRONG



SAFE



CURIOUS



CONTENT



JEALOUS



SORROWFUL



DISAPPOINTED



TENDER



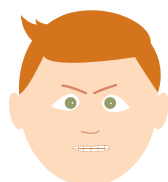
GUILTY



DELIGHTED



DISLIKING



STUBBORN



OPTIMISTIC



CONFUSED



TERRIFIED



STRESSED



BORED



PROUD



SAD